



Mono Pickleball Club

Newsletter #19 – February 27, 2024

MPC's Newsletters are the primary method of communicating with our membership regarding event registration and opportunities to play. Don't miss out! Read on!

In this edition:

- *Message from the Board – Policies and Procedures*
- *Court Scheduling and SignUp Genius*
- *Save the Dates – 3 Events*
- *Video of the Month – Get to the NVZ and Why*
- *Pop Quiz – The Answer*

Message from the Board

Policies and Procedures

As a new club, the MPC Board of Directors continues to provide opportunities for play at all levels by providing an environment that encourages sportsmanship and where interactions are respectfully social, safe, and collegial. Part of this involves creating policies and procedures to guide both the board in decision-making and the MPC members during play.

Court Etiquette, the newest policy developed by your board, may be of particular interest. You are encouraged to read *all* the policies to understand the possible impact on you and others during play.

All ***MPC Policies and Procedures*** can be reviewed by clicking :

<https://www.monopickleballclub.com/constitution-bylaws-policies>

Court Scheduling and SignUp Genius

A team of MPC members is creating the initial court schedule for our new home courts at Mono College Park for the outdoor season.

If you are a member of MPC there is NO ADDITIONAL fee to use the courts for regular play sessions.

In addition to Open Play for all levels, there will be regular playtimes designated on defined courts for Level Play, Leagues, Ladders and more.

MPC will be using *SignUp Genius* for members to select some of these opportunities. MPC has created a Guide to using *SignUp Genius* as well as a ‘practice’ sign up to assist you in being prepared to sign up to play. The attached document (Titled: SignUp Genius Instructions) guides you through the process of completing the following items:

1. Downloading the mobile app (if required)
2. Creating a free account with SignUp Genius
3. Practice selecting and deleting sign ups

Once you have created the SignUp Genius account and login, all sign ups that you have been invited to will appear in your account. The practice sign up is titled: Practice SignUp for New Players”. Good luck!

Save the Dates - There are 3 upcoming dates:

Town of Mono Grand Opening of Mono College Park courts – May 10th, 2024, 11:00am

We encourage you to come out for this event, as the game of “pickleball” will be showcased. There will be delegates representing the Ontario Trillium Foundation and the Town of Mono, both of whom generously provided funds for the rebuilding of this space into 6 pickleball courts. Showing our gratitude goes a long way in ensuring our continued dedicated use of this space. And we understand there may be CAKE involved.



MPC Celebration of MCP Courts – Saturday May 25th, (raindate Sunday May 26th)



It’s time for Mono Pickleball Club to gather for our own celebration of the completion of our new courts at Mono College Park. This is an opportunity for the MPC to recognize those who made these great courts possible. There will be lots of pickleball playing and a demo opportunity with our new acquired Slinger Ball Machine! It’s a perfect time to reconnect with previous members and meet new members. Light refreshments and some “door prizes” will round out the day. Come to play around 10:00, formal part is at 11:00, followed by more fun and games.



Euchre Night - Friday April 12th

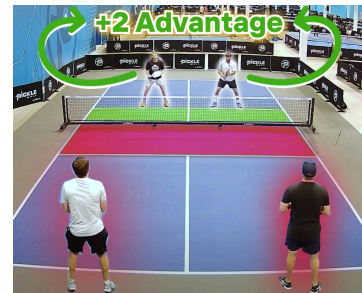
MPC's next social/FUNdraising event is on **Friday, April 12**, when the club is planning a Euchre Tournament at the Watermark party room. Beginning with a light dinner at 6pm, the games will begin at 6:30pm. Guests are asked to bring appetizers and desserts to share. Bring your own beverage of choice. The cost is \$20 per person with a limit to the number of people who can attend. Not a Euchre player? You can still come as a few tables will be set up to learn the game by a seasoned player, or just stay, snack and socialize. MPC members can bring a partner/guest. Registration information will be emailed soon.

Video Tip of the Month

Get to the NVZ Line and Why

Watch the first **5 minutes** for sure. If you are involved in competitive play, watch all 12 minutes.

<https://www.youtube.com/watch?v=29MxOqfOVhU>



POP Quiz From December: How long does it take a pickleball travelling at 40 mph to go from one paddle to the opposition's if both players are at the Non-Volley Line (kitchen)?

Pop Quiz Answer –The Answer is **0.26 seconds!** (Wow, that's fast. No wonder it requires good reflexes)